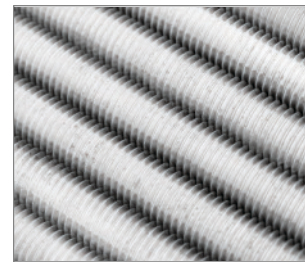


R-NOZ-KEX-II Mixer nozzle for R-KEX-II

Static mixer for bonded anchors in cartridges R-KEX-II



Product information

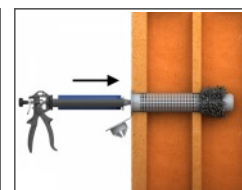
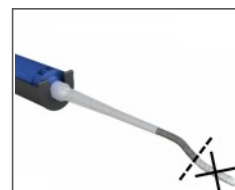
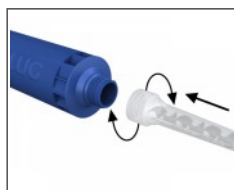
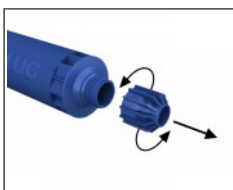
Features and benefits

- Special 16 element mixing nozzle allows for proper mixing of the resin, which ensures the reliability of the curing process
- Convenient extrusion and mixing of resin and hardener
- Available with or without hanger
- Ideal for serial applications: rebar or anchoring
- One nozzle fits all cartridge delivery systems for bonded anchors R-KEX-II
- Specially dedicated nozzles for epoxy resins
- Possibility of extension- attach
SP-CE-ED-1m or R-NOZ-EXT extension nozzle

Applications

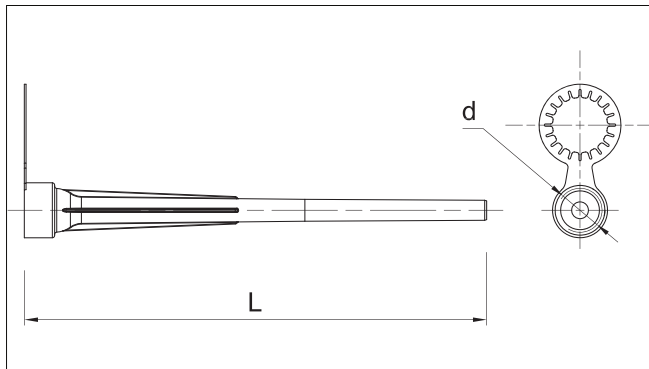
- For use in a wide range of fastening applications in concrete and solid masonry structures

Installation guide



1. Simply screw the mixer nozzle onto the resin cartridge (after removing cap) or CFS+ system
2. Before inserting nozzle to the hole inject resin until even colour is obtained
3. Insert mixing nozzle to the far end the hole and inject resin, slowly withdrawing the nozzle

Product information



Product Code	Length		Suitable for	Diameter
	L			D
	[mm]	-	-	[mm]
R-NOZ-KEX-II-10	250	16 element Mixer Nozzle	R-KEX-II	-
R-NOZ-KEX-II-100	250	16 element Mixer Nozzle	R-KEX-II	-
SP-CE-ED-1M	1000	Extension for mixer nozzle R-NOZ	-	12
R-NOZ-EXT-200	200	Extension for mixer nozzle R-NOZ	-	9.5
R-NOZ-EXT-300	300	Extension for mixer nozzle R-NOZ	-	9.5
R-NOZ-EXT-3000	3000	Extension for mixer nozzle R-NOZ	-	12

Product commercial data

Product Code	Length [mm]	Quantity [pcs]			Weight [kg]			Bar Codes
		Box	Outer	Pallet	Box	Outer	Pallet	
R-NOZ-KEX-II-10	250	10	100	2400	0.14	1.43	64.3	5906675078373
R-NOZ-KEX-II-100	250	100	500	12000	1.51	7.6	211.2	5906675078380
SP-CE-ED-1M	1000	10	10	20000	0.02	0.02	70.0	5906675601120
R-NOZ-EXT-200	200	50	1000		0.20	4.0		5906675423357
R-NOZ-EXT-300	300	50	1000		0.30	6.0		5906675423517
R-NOZ-EXT-3000	3000	1	1		0.06	0.06		5906675430041