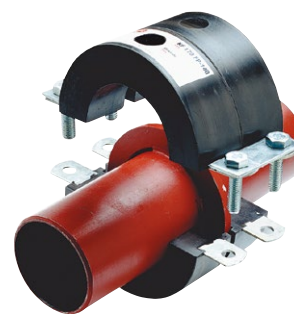
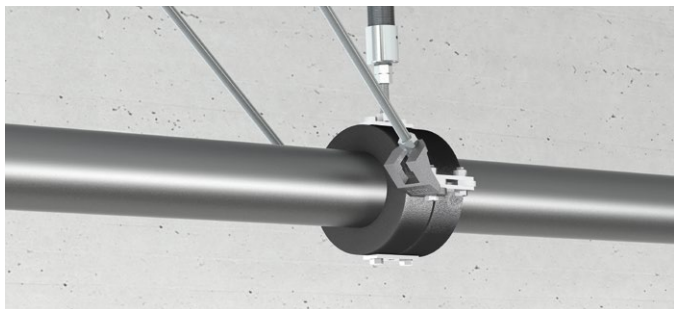


Хомут для низких температур MFP-KF



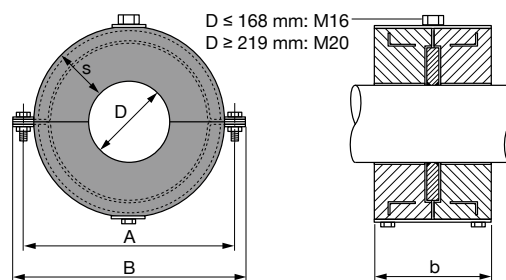
1

ПРЕИМУЩЕСТВА

- Высокоэффективный изолированный оцинкованный трубный хомут с неподвижной опорой для компенсации удлинения труб систем холодоснабжения

Технические данные

Состав материала	Полиуретановый пенопласт с закрытыми порами
Покрытие	Холодное цинкование
Сопротивление диффузии	Устойчивый к парам из-за закрытой структуры клеток жесткой пены PUR
Термостойкость	от -45 до 105 °С
Теплопроводность λ	0,042 W/mK
Сила на сжатие	2,4 Н/мм ²
Плотность	250 кг/м ³



Наименование	Зажимной винт	Момент затяжки, Нм	Толщина поперечного сечения s, мм	Ширина поперечного сечения b, мм	Ширина B, мм	Расстояние между отверстиями A, мм	Упаковка, шт.	Номер артикула
MFP-KF 76	M10	5	30	100	203	173	1	2238671
MFP-KF 89	M10	5	30	100	211	181	1	2238672
MFP-KF 114	M10	5	40	120	274	238	1	2238673
MFP-KF 133	M12	10	40	120	300	264	1	2238674
MFP-KF 140	M12	10	40	120	300	264	1	2238675
MFP-KF 159	M12	10	40	120	319	279	1	2238676
MFP-KF 168	M12	10	40	120	328	288	1	2238677
MFP-KF 219	M12	10	60	200	439	399	1	2238678
MFP-KF 273	M16	20	60	200	493	453	1	2238679
MFP-KF 324	M16	20	60	200	544	504	1	2238680
MFP-KF 356	M16	20	60	200	576	536	1	2238681
MFP-KF 368	M16	20	60	240	588	548	1	2238682
MFP-KF 406	M16	20	60	240	646	596	1	2238683
MFP-KF 457	M16	20	60	240	697	647	1	2238684
MFP-KF 508	M16	20	60	240	748	698	1	2238685
MFP-KF 609	M16	20	60	280	848	798	1	2238670

MFP-KF

A

**MFP-KF + MFP-UL /
MFP-KF + MFP-UL-1**

PROFS software installation

1× Set MFP-UL #2223129 /
1× Set MFP-UL-1 #2223133

3× HST3-M12 × 85 #2113978 /
HUS3-H 10 × 90 #2079914

MFP-KF + MFP-UL/MFP-UL-1		
#	Название	Fmax (H)
2238671	MFP-KF 76	2.000
2238672	MFP-KF 89	2.500
2238673	MFP-KF 114	3.000
2238674	MFP-KF 133	3.500
2238675	MFP-KF 140	3.500
2238676	MFP-KF 159	4.000
2238677	MFP-KF 168	4.000
2238678	MFP-KF 219	4.000
2238679	MFP-KF 273	4.000

1× MFP-KF

1× AM-M16 4.8

1× GR-G 1 1/4"

**KF 30/40
#335218**

B

**MFP-KF + MFP-UL2 /
MFP-KF + MFP-UL2-1**

PROFS software installation

1× Set MFP-UL2 #2223131 /
1× Set MFP-UL2-1 #2223135

4× HST3-M12 × 85 #2113978 /
HUS3-H 10 × 90 #2079914

MFP-KF + MFP-UL2/MFP-UL2-1		
#	Название	Fmax (H)
2238671	MFP-KF 76	2.000
2238672	MFP-KF 89	2.500
2238673	MFP-KF 114	3.000
2238674	MFP-KF 133	3.500
2238675	MFP-KF 140	3.500
2238676	MFP-KF 159	4.000
2238677	MFP-KF 168	4.000
2238678	MFP-KF 219	4.000
2238679	MFP-KF 273	4.000

1× MFP-KF

2× AM-M16 4.8

1× GR-G 1 1/4"

**KF 30/40
#335218**



- de Auswahl des Schweißverfahren, Schweißzusatz und die Auslegung der Kehlnahtgröße obliegt dem Kunden!
- en Selection of the welding process, welding addition and the design of the fillet weld size is the responsibility of the customer!
- fr La sélection du procédé de soudage, de l'addition de soudage et de la conception de la taille de la soudure d'angle est à la charge du client!
- it La selezione del processo di saldatura, l'aggiunta della saldatura e la progettazione della dimensione della saldatura del raccordo sono responsabilità del cliente!

1

**KF 30/40
#335218**

2

#	Название	SW	К
2238671	MFP-KF 76	16	12 Hm
2238672	MFP-KF 89	16	12 Hm
2238673	MFP-KF 114	16	12 Hm
2238674	MFP-KF 133	18	20 Hm
2238675	MFP-KF 140	18	20 Hm
2238676	MFP-KF 159	18	20 Hm
2238677	MFP-KF 168	18	20 Hm
2238678	MFP-KF 219	18	20 Hm
2238679	MFP-KF 273	24	45 Hm

3

**MFP-UL/ -UL-1
V = H-150 MM
MFP-UL2/ -UL2-1
V = H-190 MM**

GR-G 1 1/4"

4

5

6

0 MM

7

0 MM

MFP-KF

#	Название	SW	Тор.
2238671	MFP-KF 76	6	7 Нм
2238672	MFP-KF 89	6	7 Нм
2238673	MFP-KF 114	18	20 Нм
2238674	MFP-KF 133	18	20 Нм
2238675	MFP-KF 140	18	20 Нм
2238676	MFP-KF 159	18	20 Нм
2238677	MFP-KF 168	18	20 Нм
2238678	MFP-KF 219	18	20 Нм
2238679	MFP-KF 273	18	20 Нм

MFP-UL/-UL-I
1× B₁
MFP-UL2/-UL2-I
1× B₁, 1× B₂

$B_1 = (H - 50 \text{ мм}) \times 1.5$
 $B_2 = B_1 - 50 \text{ мм}$

> 0 мм / max. 20 мм

15 Nm (11 ft-lb)

max. 15°

$\alpha = \beta$

MFP-KF + MFP-ULD / MFP-KF + MFP-ULD-I

1× Set MFP-ULD #2223130 / 1× Set MFP-ULD-I #2223134

6× HST3-M12 × 85 #2113978 / HUS3-H 10 × 90 #2079914

1× MFP-KF

2× AM-M16 4.8
2× GR-G 1 1/4"

MFP-KF + MFP-ULD/MFP-ULD-I		
#	Название	F _{max} (H)
2238678	MFP-KF 219	9.000
2238679	MFP-KF 273	12.000
2238680	MFP-KF 324	14.000
2238681	MFP-KF 356	14.000
2238682	MFP-KF 368	14.000
2238683	MFP-KF 406	14.000
2238684	MFP-KF 457	14.000
2238685	MFP-KF 508	14.000
2238670	MFP-KF 609	14.000

KF 30/40 #335218

MFP-KF + MFP-ULD2 / MFP-KF + MFP-ULD2-I

1× Set MFP-ULD2 #2223132 / 1× Set MFP-ULD2-I #2223136

8× HST3-M12 × 85 #2113978 / HUS3-H 10 × 90 #2079914

1× MFP-KF

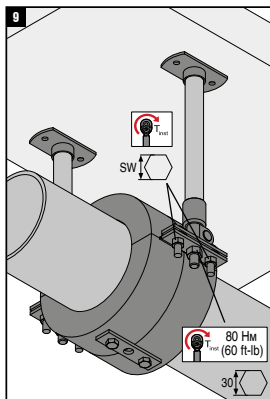
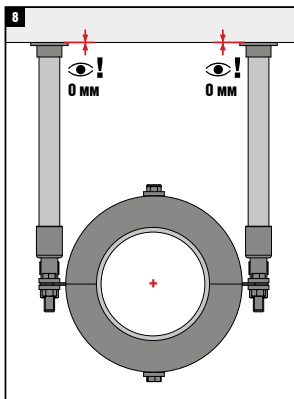
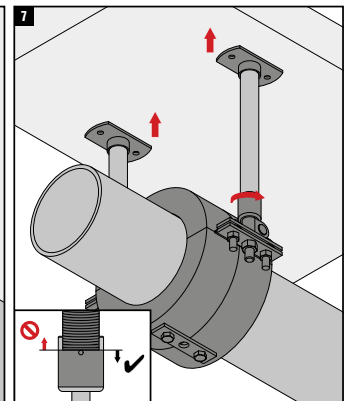
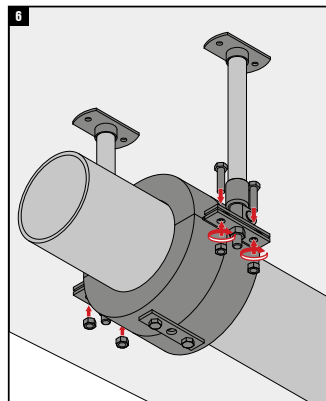
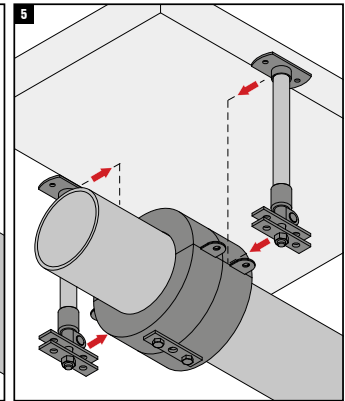
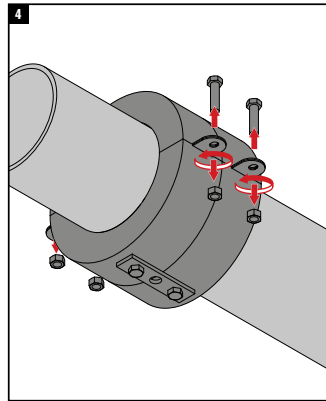
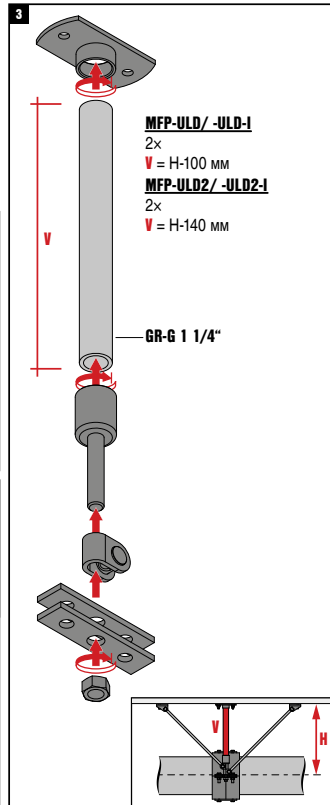
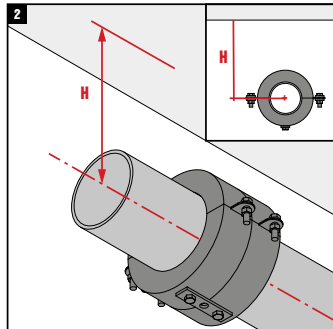
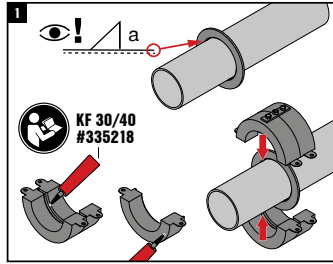
4× AM-M16 4.8
2× GR-G 1 1/4"

MFP-KF + MFP-ULD2/MFP-ULD2-I		
#	Название	F _{max} (H)
2238678	MFP-KF 219	9.000
2238679	MFP-KF 273	12.000
2238680	MFP-KF 324	14.000
2238681	MFP-KF 356	14.000
2238682	MFP-KF 368	14.000
2238683	MFP-KF 406	14.000
2238684	MFP-KF 457	14.000
2238685	MFP-KF 508	14.000
2238670	MFP-KF 609	14.000

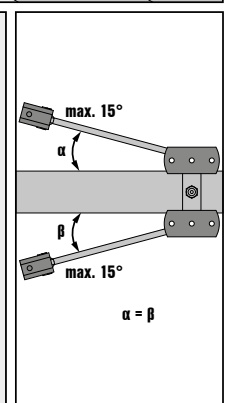
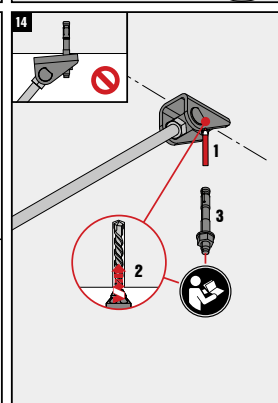
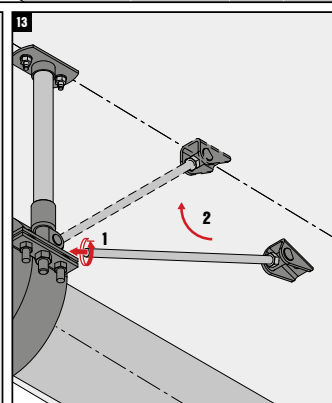
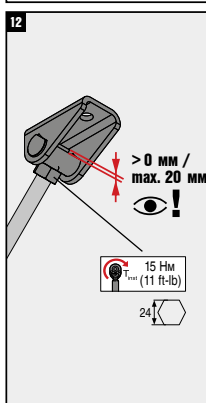
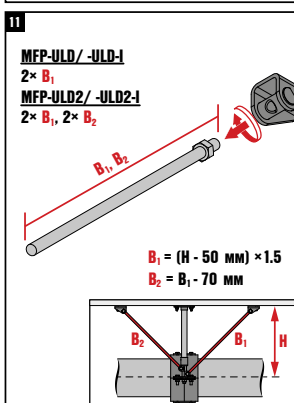
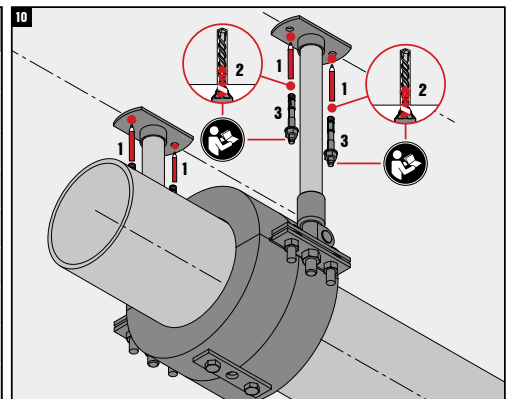
KF 30/40 #335218

MFP-KF

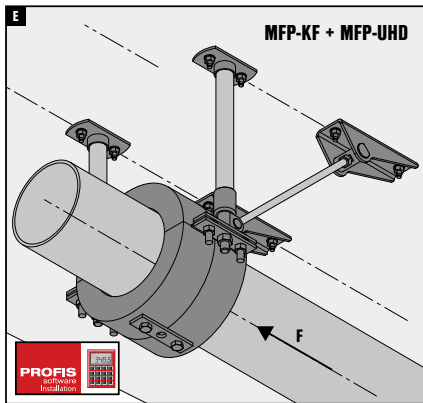

- de Auswahl des Schweißverfahren, Schweißzusatz und die Auslegung der Kehlnahtgröße obliegt dem Kunden!
- en Selection of the welding process, welding addition and the design of the fillet weld size is the responsibility of the customer!
- fr La sélection du procédé de soudage, de l'addition de soudage et de la conception de la taille de la soudure d'angle est à la charge du client!
- it La selezione del processo di saldatura, l'aggiunta della saldatura e la progettazione della dimensione della saldatura del raccordo sono responsabilità del cliente!

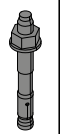


#	Название	SW	T _{max}
2238678	MFP-KF 219	18	20 Нм
2238679	MFP-KF 273	24	45 Нм
2238680	MFP-KF 324	24	45 Нм
2238681	MFP-KF 356	24	45 Нм
2238682	MFP-KF 368	24	45 Нм
2238683	MFP-KF 406	24	45 Нм
2238684	MFP-KF 457	24	45 Нм
2238685	MFP-KF 508	24	45 Нм
2238670	MFP-KF 609	24	45 Нм

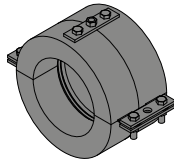


MFP-KF


 1× Set MFP-UHD
#2223138

 4× HST3-M12 × 85
#2113978 /
HUS3-H 10 × 90
#2079914

 4× HST3-M16 × 135
#2105858 /
HUS3-H 14 × 130
#2079923

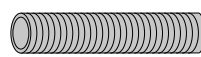

1× MFP-KF



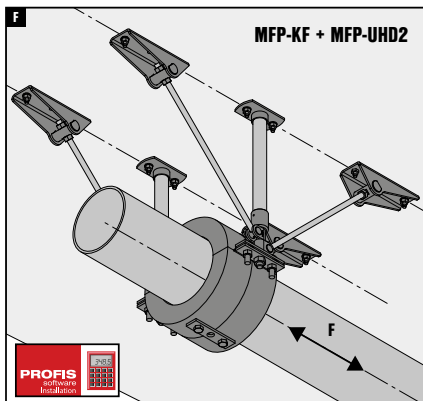
2× AM-M16 4.8



2× GR-G 1 1/4"



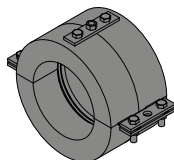
MFP-KF + MFP-UHD		
#	Название	Fmax (H)
2238678	MFP-KF 219	9.000
2238679	MFP-KF 273	12.000
2238680	MFP-KF 324	14.500
2238681	MFP-KF 356	16.500
2238682	MFP-KF 368	16.500
2238683	MFP-KF 406	18.000
2238684	MFP-KF 457	18.000
2238685	MFP-KF 508	20.000
2238670	MFP-KF 609	20.000

 KF 30/40
#335218

 1× Set MFP-UHD2
#2223140

 4× HST3-M12 × 85
#2113978 /
HUS3-H 10 × 90
#2079914

 8× HST3-M16 × 135
#2105858 /
HUS3-H 14 × 130
#2079923

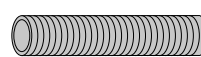

1× MFP-KF



4× AM-M16 4.8



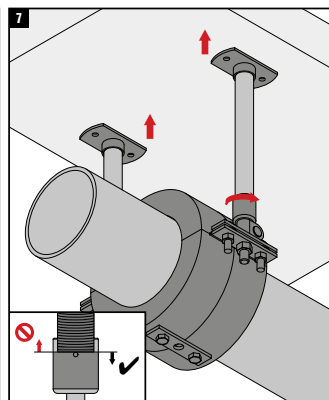
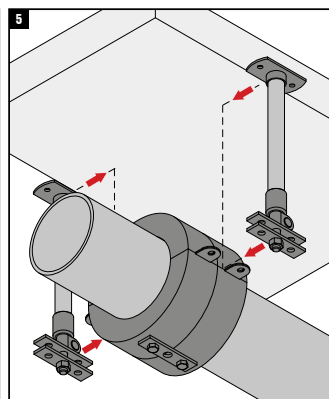
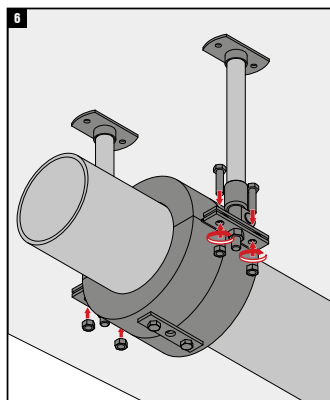
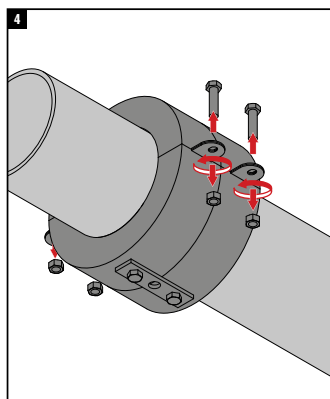
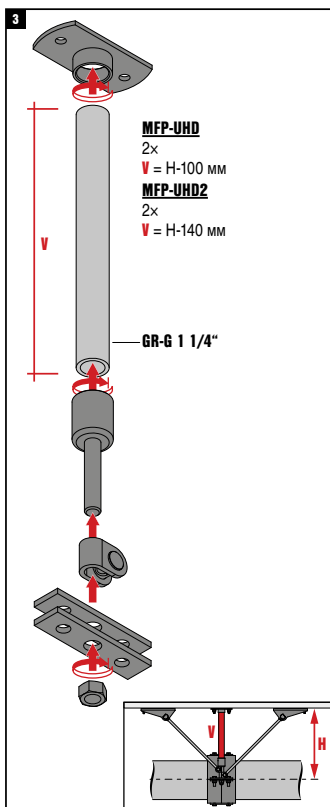
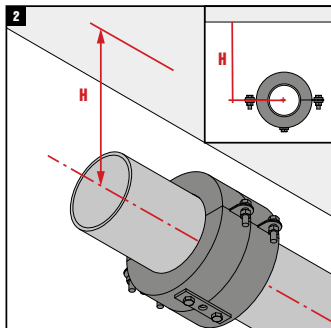
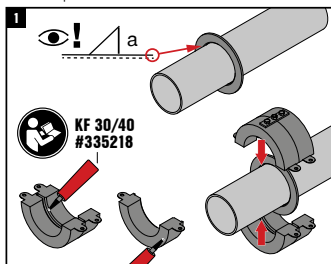
2× GR-G 1 1/4"



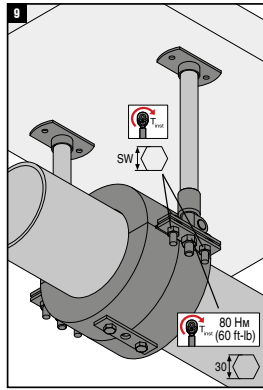
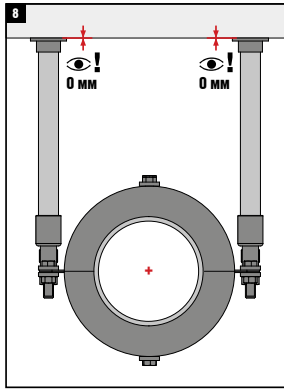
MFP-KF + MFP-UHD2		
#	Название	Fmax (H)
2238678	MFP-KF 219	9.000
2238679	MFP-KF 273	12.000
2238680	MFP-KF 324	14.500
2238681	MFP-KF 356	16.500
2238682	MFP-KF 368	16.500
2238683	MFP-KF 406	18.000
2238684	MFP-KF 457	18.000
2238685	MFP-KF 508	20.000
2238670	MFP-KF 609	20.000

 KF 30/40
#335218


- de Auswahl des Schweißverfahren, Schweißzusatz und die Auslegung der Kehlnahtgröße obliegt dem Kunden!
- en Selection of the welding process, welding addition and the design of the fillet weld size is the responsibility of the customer!
- fr La sélection du procédé de soudage, de l'addition de soudage et de la conception de la taille de la soudure d'angle est à la charge du client!
- it La selezione del processo di saldatura, l'aggiunta della saldatura e la progettazione della dimensione della saldatura del raccordo sono responsabilità del cliente!



MFP-KF



#	Название	SW	Torque
2238678	MFP-KF 219	18	20 Nm
2238679	MFP-KF 273	24	45 Nm
2238680	MFP-KF 324	24	45 Nm
2238681	MFP-KF 356	24	45 Nm
2238682	MFP-KF 368	24	45 Nm
2238683	MFP-KF 406	24	45 Nm
2238684	MFP-KF 457	24	45 Nm
2238685	MFP-KF 508	24	45 Nm
2238670	MFP-KF 609	24	45 Nm

