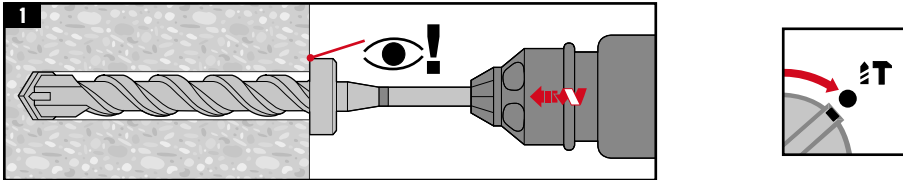
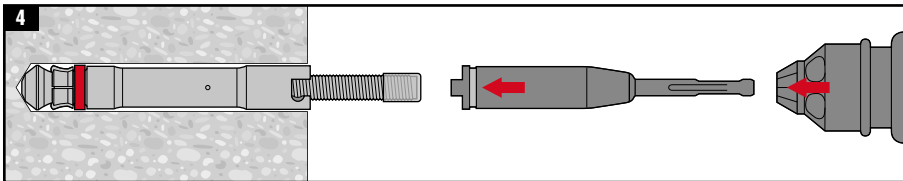
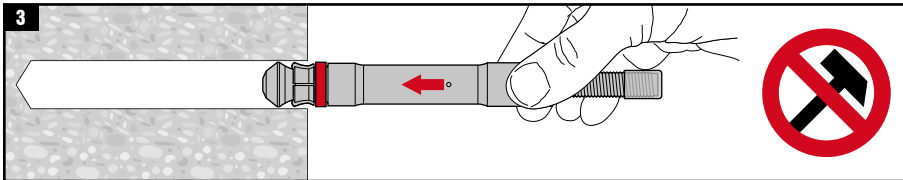
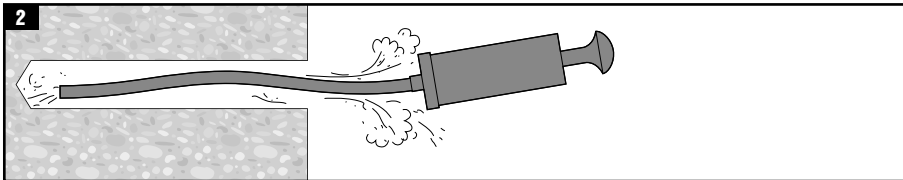


HDA-P	max. t_{fix}	d_f
HDA-P M10 x 100/20	20 mm	12 mm
HDA-P M12 x 125/30	30 mm	14 mm
HDA-P M12 x 125/50	50 mm	14 mm



1.1

HDA-P	TE-C (SDS plus)	TE-Y (SDS max)
HDA-P M10 x 100/20	TE-C-HDA-B 20 x 100	TE-Y-HDA-B 20 x 100
HDA-P M12 x 125/30	TE-C-HDA-B 22 x 125	TE-Y-HDA-B 22 x 125
HDA-P M12 x 125/50	TE-C-HDA-B 22 x 125	TE-Y-HDA-B 22 x 125



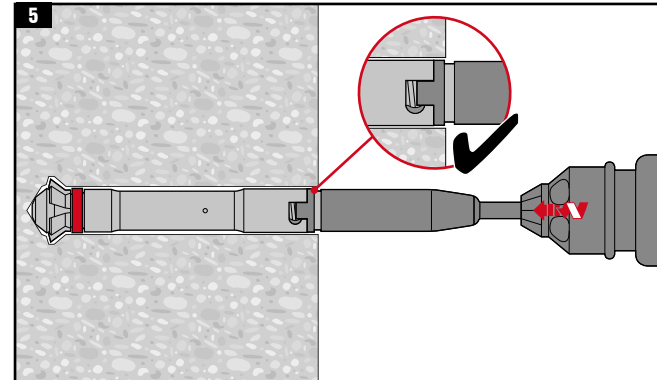
4.1

HDA-P	TE-C (SDS plus)	TE-Y (SDS max)
HDA-P M10	TE 25, TE 30-A, TE 40	TE 56, TE 60
HDA-P M12	TE 25, TE 30-A, TE 40	TE 56, TE 60

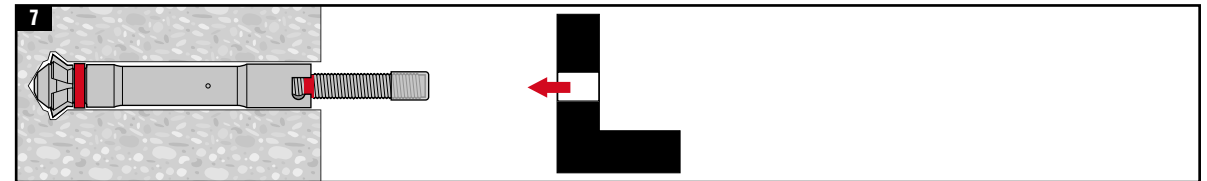
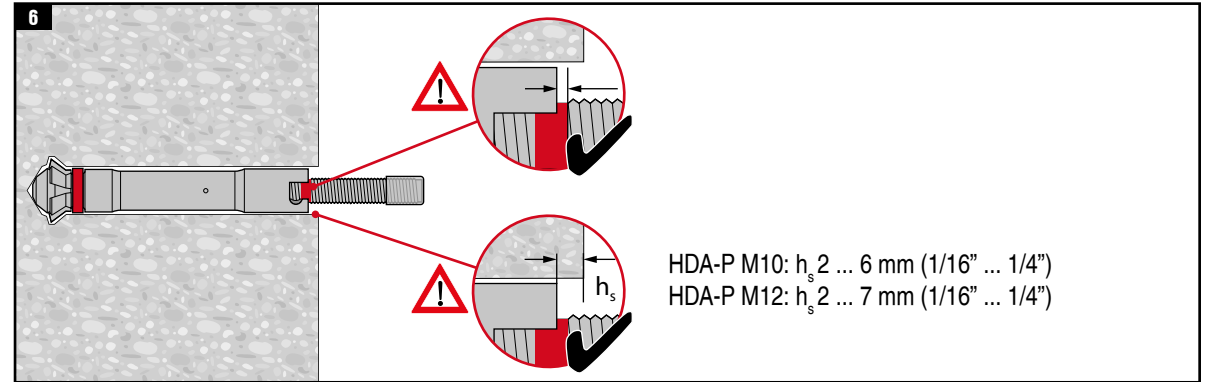
4.2

HDA-P	TE-C (SDS plus)	TE-Y (SDS max)
HDA-P M10	TE-C-HDA-ST20-M10	TE-Y-HDA-ST20-M10
HDA-P M12	TE-C-HDA-ST22-M12	TE-Y-HDA-ST22-M12

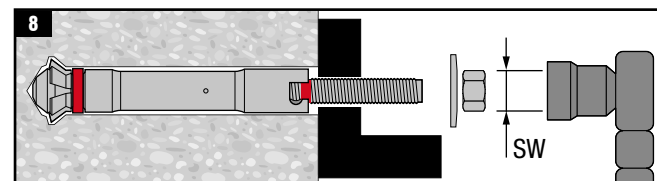
5



TE	Setting direction	$t_{setting}$
TE 25	↑ 1, ↓ 2	10 ... 20 sec (max. 60 sec)
TE 30-A	↑	10 ... 30 sec (max. 60 sec)
TE 40	↑	10 ... 20 sec (max. 30 sec)
TE 56	↑, ↓	10 ... 20 sec (max. 60 sec)
TE 60	↑, ↓	15 ... 35 sec (max. 60 sec)



8



HDA-P	SW	T_{inst}
HDA-P M10	17	50 Nm (37 ft-lb)
HDA-P M12	19	80 Nm (59 ft-lb)