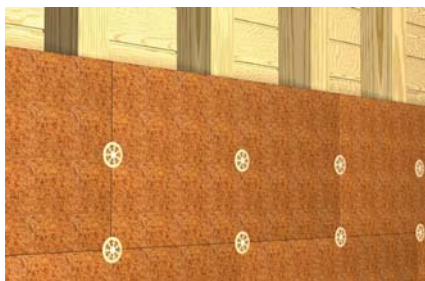


## Surface or countersunk ETICS fixing for board materials with approved Power-Fast screw



Fixing of wooden soft fibre boards on solid wood



Attachment of polystyrene boards on OSB-panel

### BUILDING MATERIALS

- MDF boards
- OSB boards
- Chipboard
- Gypsum fibreboard
- Solid wood

### ADVANTAGES

- Pre-fitted fixing with the approved fischer Power-Fast screw. This guarantees safe retention in the substrate.
- The minimum screw-in depth of 30 mm guarantees fast assembly. There is no need to pre-drill the hole.
- Plugs are enclosed in every packaging unit.
- The fixing discs can be combined with the large insulating discs DT 90, DT 110 and DT 140 when very soft insulating materials are used.
- Countersinkable assembly using the TTS assembly tool is possible in soft materials such as polystyrene rigid foam boards PS 15 or PS 20.
- For insulating material thicknesses up to 280 mm.

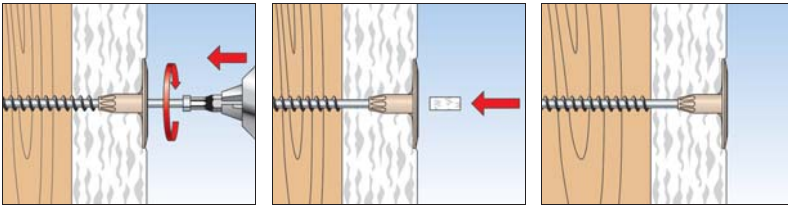
### APPLICATIONS

- Attachment of ETICS insulating boards on wooden substructures
- Flush installation in ETICS insulating materials e.g. polystyrene
- Flush-to-surface installation in wooden soft fibre boards

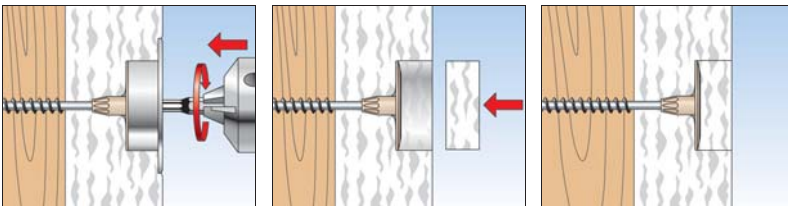
### FUNCTIONING

- The fixing is inserted using a standard T30 bit for flush installation.
- The TSS assembly tool is required for countersunk installation. This is used for precise positioning and screwing of the fixing. The counterbore is sealed using an insulating disc available, resulting in a level insulating material surface.
- The disc of the TSS assembly tool can also be turned and used for flush-to-surface installation. This prevents the disc from being set too deep.

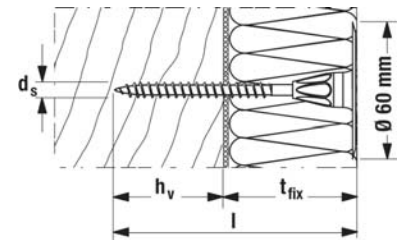
## FLUSH-TO SURFACE INSTALLATION



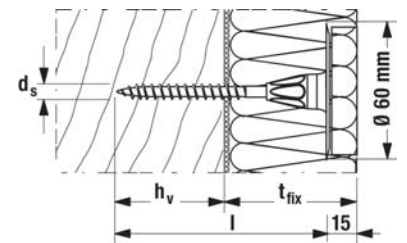
## COUNTERSUNK INSTALLATION



## TECHNICAL DATA



surface-flush installation



recessed installation

Item	Art.-No.	Fixing length	Disk Ø	Screw diameter	Anchorage depth	Usable length at surface-flush installation	Usable length at anchorage depth 70mm	Sales unit
		l [mm]	[mm]	d <sub>s</sub> [mm]	h <sub>v</sub> [mm]	t <sub>fix</sub> [mm]	t <sub>fix</sub> [mm]	
termofix 6H-NT 60	523198 <sup>1)</sup>	60	60	6,0	30	30	—	100
termofix 6H-NT 80	523199	80	60	6,0	30	50	65	100
termofix 6H-NT 100	523200	100	60	6,0	30	70	85	100
termofix 6H-NT 120	523201	120	60	6,0	30	90	105	100
termofix 6H-NT 140	523202	140	60	6,0	30	110	125	100
termofix 6H-NT 160	523203	160	60	6,0	30	130	145	100
termofix 6H-NT 180	523204	180	60	6,0	30	150	165	100
termofix 6H-NT 200	523205	200	60	6,0	30	170	185	100
termofix 6H-NT 220	523206	220	60	6,0	30	190	205	100
termofix 6H-NT 240	523207	240	60	6,0	30	210	225	100
termofix 6H-NT 260	523208	260	60	6,0	30	230	245	100
termofix 6H-NT 280	523209	280	60	6,0	30	250	265	100
termofix 6H-NT 300	523210	300	60	6,0	30	270	285	100
termofix 6H-NT 320	523211	320	60	6,0	30	290	305	100

1) suitable for flush-mounting installation only